

West Branch of the Little Spokane River

By: Grant Miller, President, Sacheen Lake Association

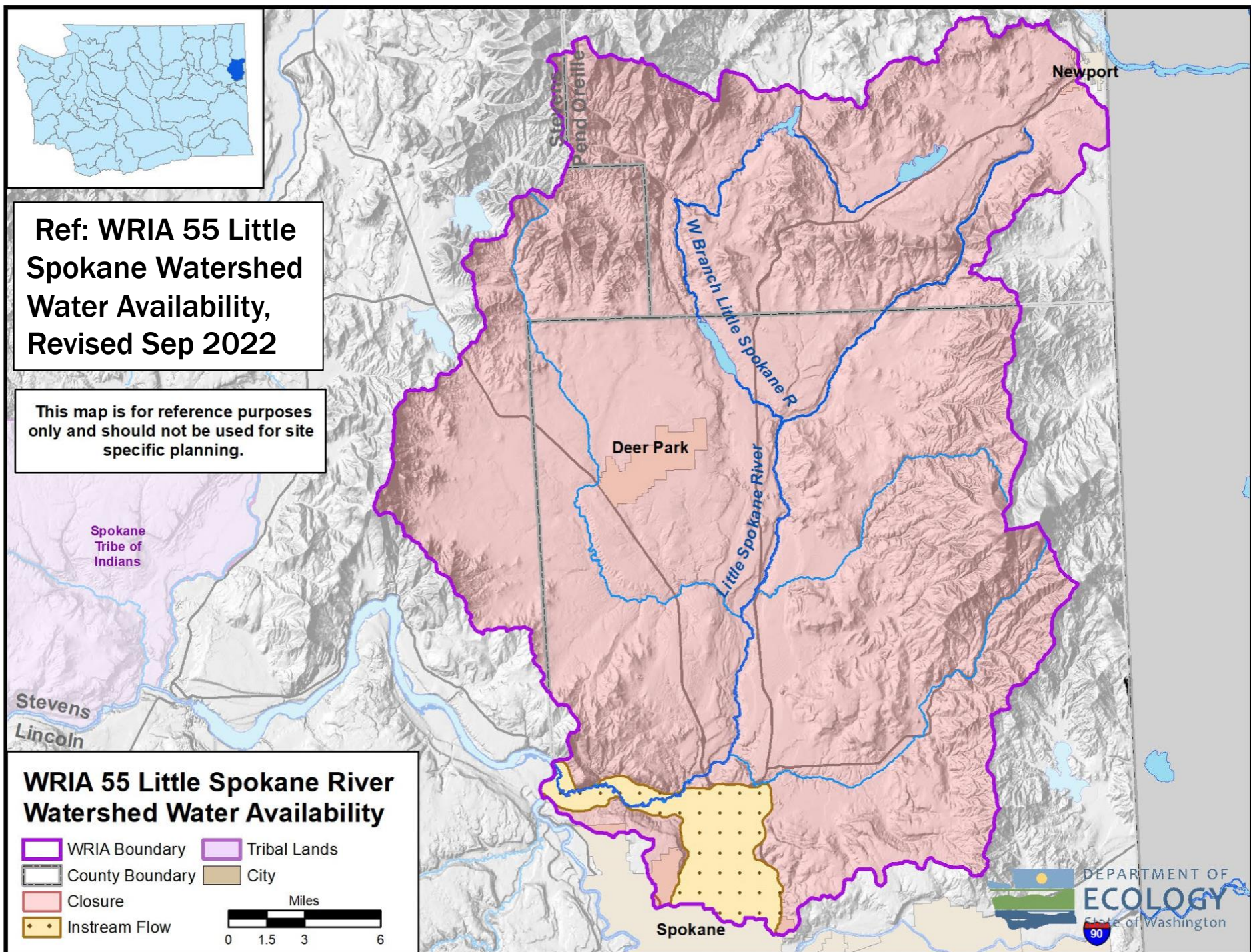
3 April 2025

Purpose

- Provide information on the water flow through Sacheen Lake and its possible implications to lake level
- Note: from hereon, the **W**est **B**ran**ch** of the **L**ittle **S**pokane River will be identified as WBLS

West Branch of the Little Spokane

- West Branch of the Little Spokane River flows through Sacheen Lake from Diamond Lake (called Moon Creek)
- Sacheen Lake has additional tributaries into it including Cedar Creek and ground spring water



Path and Tributaries to the WBLS

- Lake to lake path
 - Diamond Lake to
 - Sacheen Lake to
 - Trout Lake to
 - Horseshoe Lake to
 - Eloika Lake to
 - Joins the Little Spokane River north of Milan and east of Hwy 2
- Major Tributaries
 - Buck Creek via Horseshoe Lake
 - Hemlock Creek feed from Ponderosa Lake
 - Heel Creek via feed into Horseshoe Lake coming from Lost Lake